



**mall
galleries**
Venue Hire

Venue Hire

Exhibitions • Art Fairs • Auctions

galler hire@mallgalleries.com

www.mallgalleries.org.uk/venue-hire

020 7968 0958

About Us

Welcome to Mall Galleries, a visual arts charity managed by the Federation of British Artists.

By hiring Mall Galleries, you are supporting the charitable objectives of the Federation of British Artists (FBA) to empower artists through a not-for-profit programme of exhibitions and events, prizes and awards with a focus on figurative art.

The FBA was founded in 1961 and comprises a collective of nine leading art societies, eight of which stage annual open exhibitions at Mall Galleries. The FBA is entirely self-funded and commits any surplus to furthering its charitable mission.

Alongside our eight society exhibitions, we host an exciting range of exhibitions led by our venue hirers, all of which add incredible value to our programme.

In an average year, we present

**25+
EXHIBITIONS**

**100+
EVENTS**

**£100,000+
WORTH OF
PRIZES &
AWARDS**



The Venue

Mall Galleries has established itself as a hidden gem venue ideally situated in the heart of Central London, a short walk from Charing Cross and Piccadilly Circus.

With our offering of over 450sqm of space, dynamic layout and unique physical features, the venue is suitable for events and exhibitions ranging from:

- Solo/Group shows
- Art Fairs
- Auctions
- Product Launches
- Awards
- Fashion Shows

Each gallery varies in aesthetic appeal and are well-lit, spacious and equipped to the highest specification. Our spaces are expertly matched with knowledgeable staff and specialist services.

Key features:

- CCTV
- Intruder alarm
- Security gates
- Power
- WiFi
- PA system
- Lift and Ramp Access



West Gallery



East Gallery



North Gallery



Our Offering

We make venue hire as easy as possible for our clients, with the following essential services included in what we offer:

- Our team receive, process, install and dismantle your exhibition and make the walls good at the end.
- We promote your exhibition on our website, social media and other channels both online and offline.
- One evening reception is included, where we provide staffing, security (up to 5 hours) and access to our in-house inventory including chairs, tables, coat rails and AV system.
- Exclusive access to our Approved Supplier list, featuring industry-leading event suppliers selected to support you throughout.
- You receive expert support during the lead up and throughout your hire period by the Venue Hire team.



Our Reach

120,000+
SOCIAL MEDIA
FOLLOWERS*

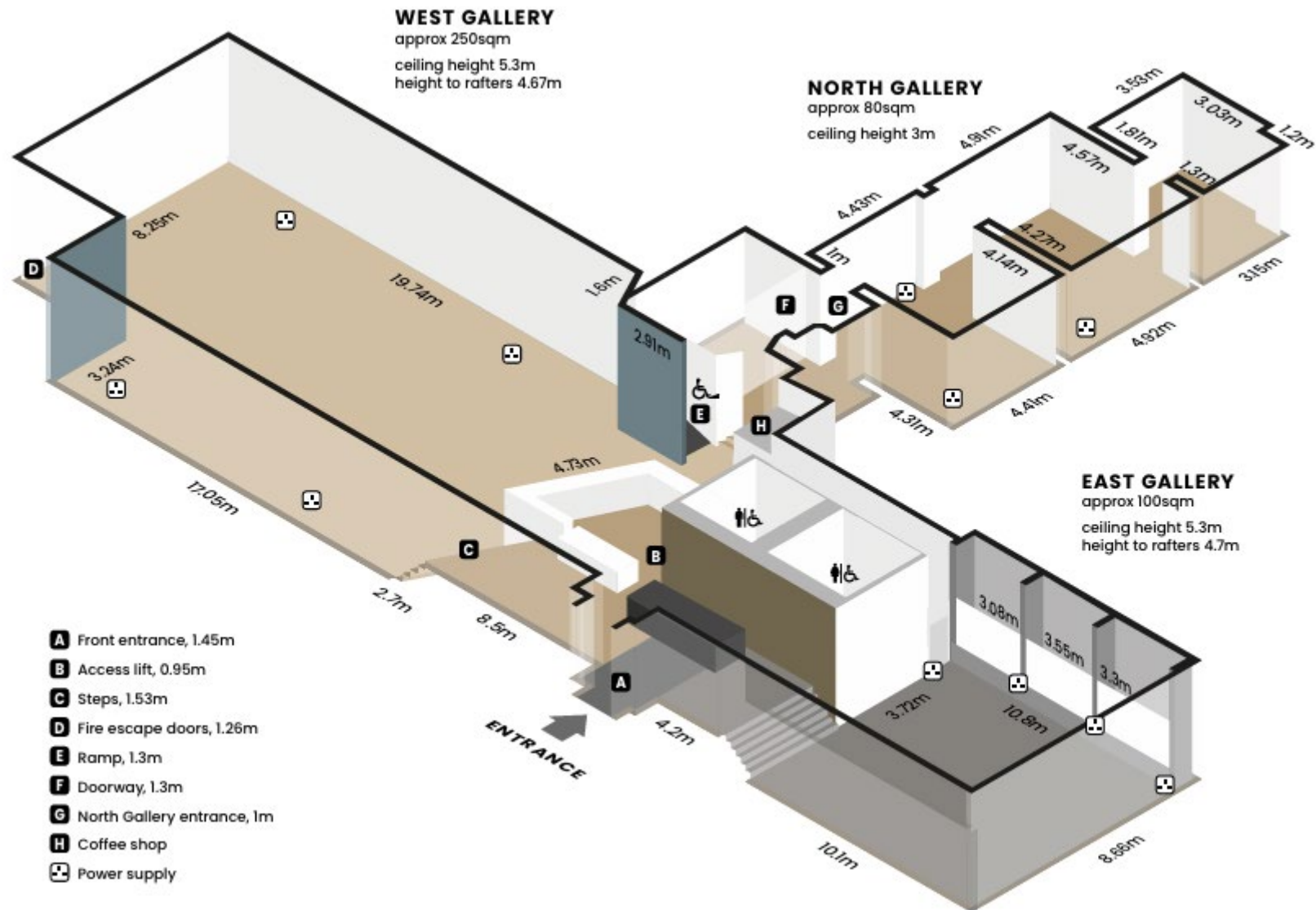
35,000+
NEWSLETTER
SUBSCRIBERS

40,000+
YEARLY
VISITORS

*Across all social media channels including Instagram, Facebook and X (formerly Twitter)



3D Floor Plan

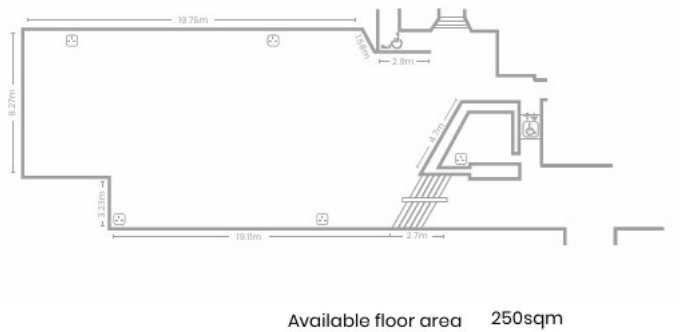


West Gallery

The West Gallery is our largest exhibiting space, complete with high ceilings and warm oak floors.

Features

- Oak wood floors
- Museum Standards Accredited
- Gallery grade track lighting
- Climate controlled
- Installation ready walls
- Acoustic panels
- x4 wall partitions (collapsable)
- Dedicated FTTP line
- Ceiling hanging points
- Wooden benches
- Climate controlled
- Café



Available floor area 250sqm
350 standing capacity

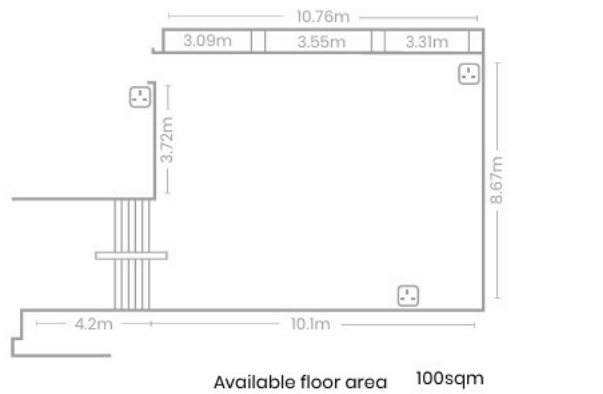


East Gallery

The East Gallery is a contemporary, cool gallery space that retains its nineteenth century features including exposed steel structures and concrete flooring.

Features

- Museum Standards Accredited
- Gallery grade track lighting
- Climate controlled
- Installation ready walls
- Ceiling hanging points
- Wooden benches
- Original windows
- Ceiling hanging points
- Recently renovated floor 3.09m 3.72m
- Climate controlled



Available floor area 100sqm
100 standing capacity



North Gallery

The North Gallery comprises three interconnecting rooms ideal for intimate viewings or smaller artwork showcases. It is also an ideal back of house space.

Features

- Museum Standards Accredited
- Installation ready walls
- Oak wood floors
- Original arch features
- Track lighting
- Intimate space
- Wooden benches
- Ceiling fans



Available floor area 80sqm
70 standing capacity



Exhibition Supported Hire

What's Included

Art Services

- Technical Project Manager
- Technician support for installation and dismantle
- Artwork processing
- Parking permits for deliveries along The Mall

Promotional Benefits

- Feature in newsletter and printed What's On brochure
- A dedicated page on our website
- Dedicated posts across social media channels (Instagram, Facebook & X)

Reception Night x 1

- Account Manager
- Gallery Reception Staff support
- Duty Manager
- Security for up to 5 hours

Venue Support

- Account Manager
- Duty Manager
- Gallery Assistants

Gallery Inventory

- Plinths
- Stage
- Lectern
- Microphones
- PA system
- And more

Rates

Weekly, excluding VAT:

| | |
|---------------|---------|
| All Galleries | £40,000 |
| West Gallery | £22,000 |
| East Gallery | £12,500 |
| North Gallery | £8,000 |

NB: It is mandatory to hire a minimum of two galleries, and this must include the West Gallery. On occasion and where availability allows, we can permit the hire of one gallery. Further details can be discussed upon receipt of your application.

T&Cs

1. Exhibition hire is based on a minimum of one week
2. Hire period includes installation and dismantle
3. Public opening is typically from Tuesday to Saturday, 10am to 5pm (changes can be discussed)
4. Use of accredited caterers is mandatory
5. A range of accredited exhibition suppliers are available
6. We offer a 10% discount to all registered charities





Application & Vetting Process

Mall Galleries welcomes exhibition proposals from solo artists, independent curators, group shows, art societies, as well as art fairs and auctions focusing on a range of artistic disciplines and media.

Please note that all prospective exhibitors are required to complete a proposal form, which we will present to the Exhibition Vetting Panel.

The primary purpose of the Vetting Panel is to ensure that our programme and artistic merit are considered and prioritised when reviewing exhibition proposals.

How to Apply

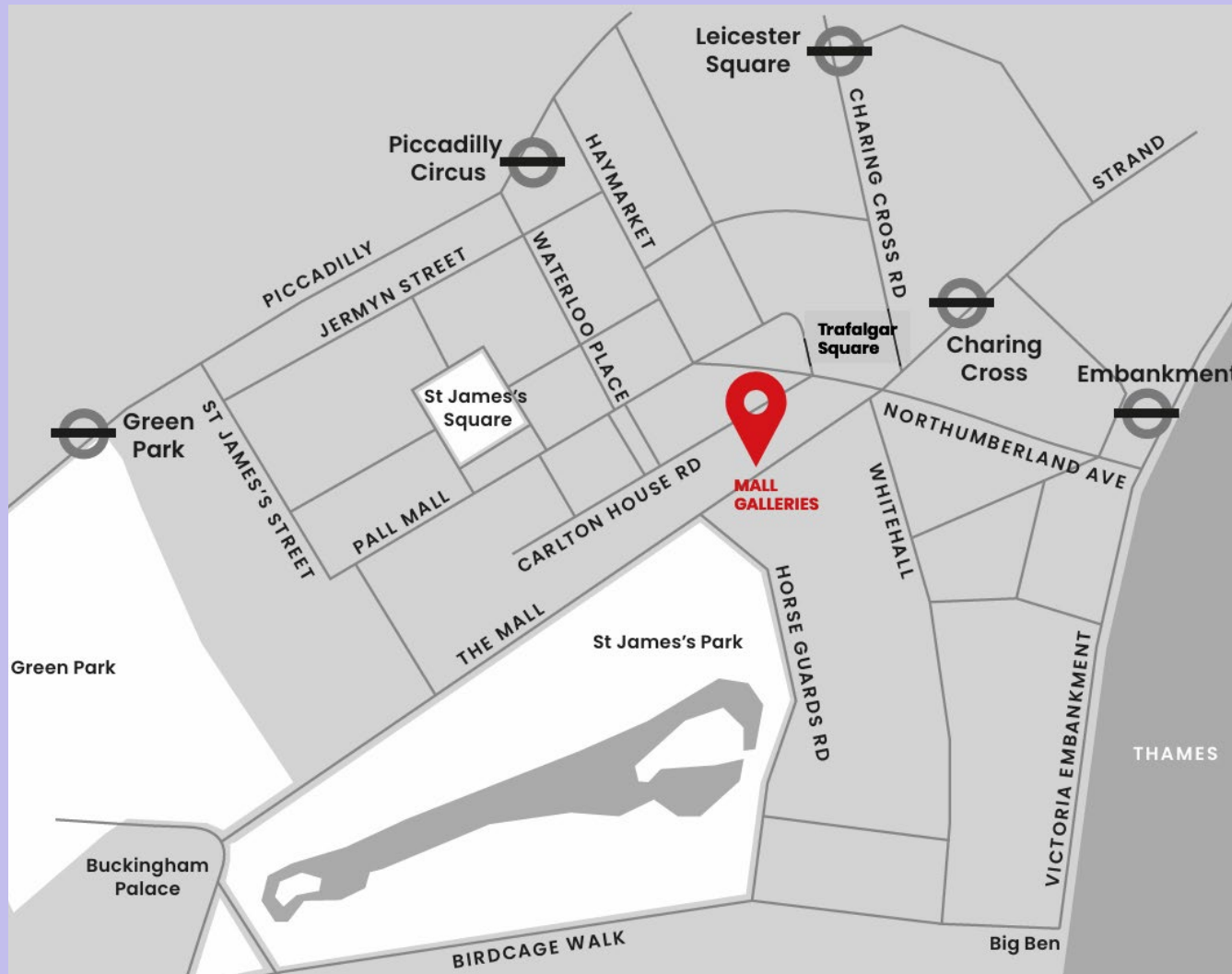
Please contact us to discuss availability and request an application form:

galleryhire@mallgalleries.com

020 7968 0958



Our Location



By London Underground

Nearest Stations:

Charing Cross (Northern line, Bakerloo line, 500m, 7 min. walk)

Embankment (Circle, District, Northern, and Bakerloo lines, 650m, 10 min. walk)

Piccadilly Circus (Piccadilly line, Bakerloo line, 800m, 10 min. walk)

By Rail

Nearest Stations:

Charing Cross (500m, 7 min. walk)

Waterloo (0.8 mile, 19 min. walk)

**mall
galleries**
Venue Hire